

CDD Information May 2024: Lake Planting

Planting

Last year was the first year ever that Tesoro CDD added plants to lakes. The west side lakes were designed with Littoral Shelves (shallow areas with sandy bottoms). These were planted in 2023 and have grown well, adding a new look to many of these lakes. Most of these plantings have survived the weather and level changes, although very high water does inhibit the growth of the very shallow water plants, which we took into account this year.

This year we looked to expand this planting and have done lakes in the east side where there are homes, and some of the lakes around the Club House area. In all of these we planted a range of indigenous plants in three zones: shallow water / muddy area (less than 12”), middle water (around 12”) and deeper water (less than 24”). All these depths are relative as the amount of rainfall varies dramatically and hence the water levels. None of these plants will migrate to the main areas of the lakes as the water is too deep there. For this year we have done planting in our lakes to expand these indigenous plants.

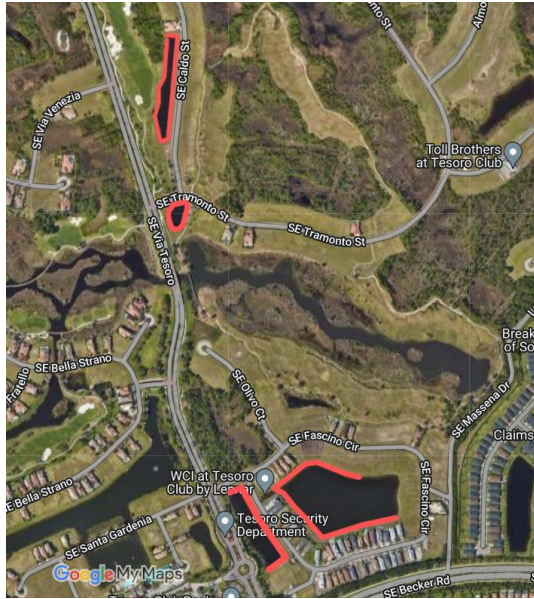
However, the east side lakes do not have littoral shelves, so the mix of plants has moved away from the very shallow water plants. We have planted in discrete areas, as the extent of the lake shores is so large it is not economical to do continuous planting – for example the lake enclosed by Fascino Circle has a perimeter of around half a mile! It will also allow us to see which plants do the best in the east side lakes. To show the planting and I enclosed a photo of the view of the lake along hole #8 and Caldo Rd:



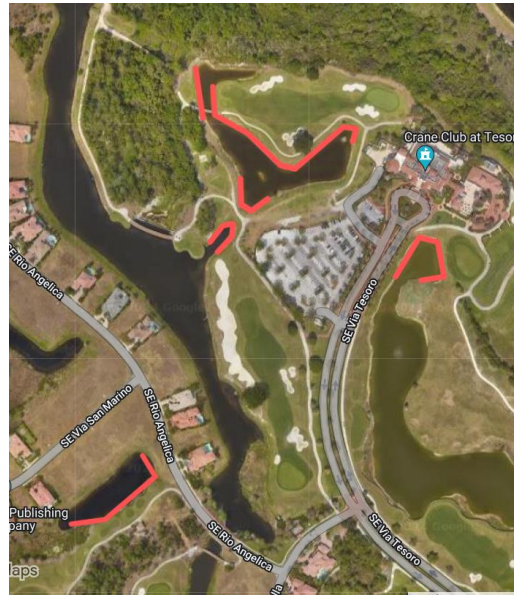
The areas that were planted by Native Lands, who look after our Conservation Areas, for the CDD are marked in red on the maps below with a total of:

- Pickerl Weed 8,086 plants
- Duck Potato 7,858 plants
- Swamp Lilies 1,000 plants
- Water Lilies 1,025 plants

Southern Portion: East side



Northern Portion: Clubhouse surrounds



Plants were also added to the waterfall on hole #4 to improve the feature.

An enormous undertaking and hopefully the weather and rain will support these plants growing and adding to our beautiful community. The normal trimming has continued as well as the clearing of additional areas as we remove the overgrowth and invasive species from our community.

Board Of Supervisors

John Vogt (Chairman)
Rod O'Connor
Rosemary Jones
Allen Borden
Emily Jones